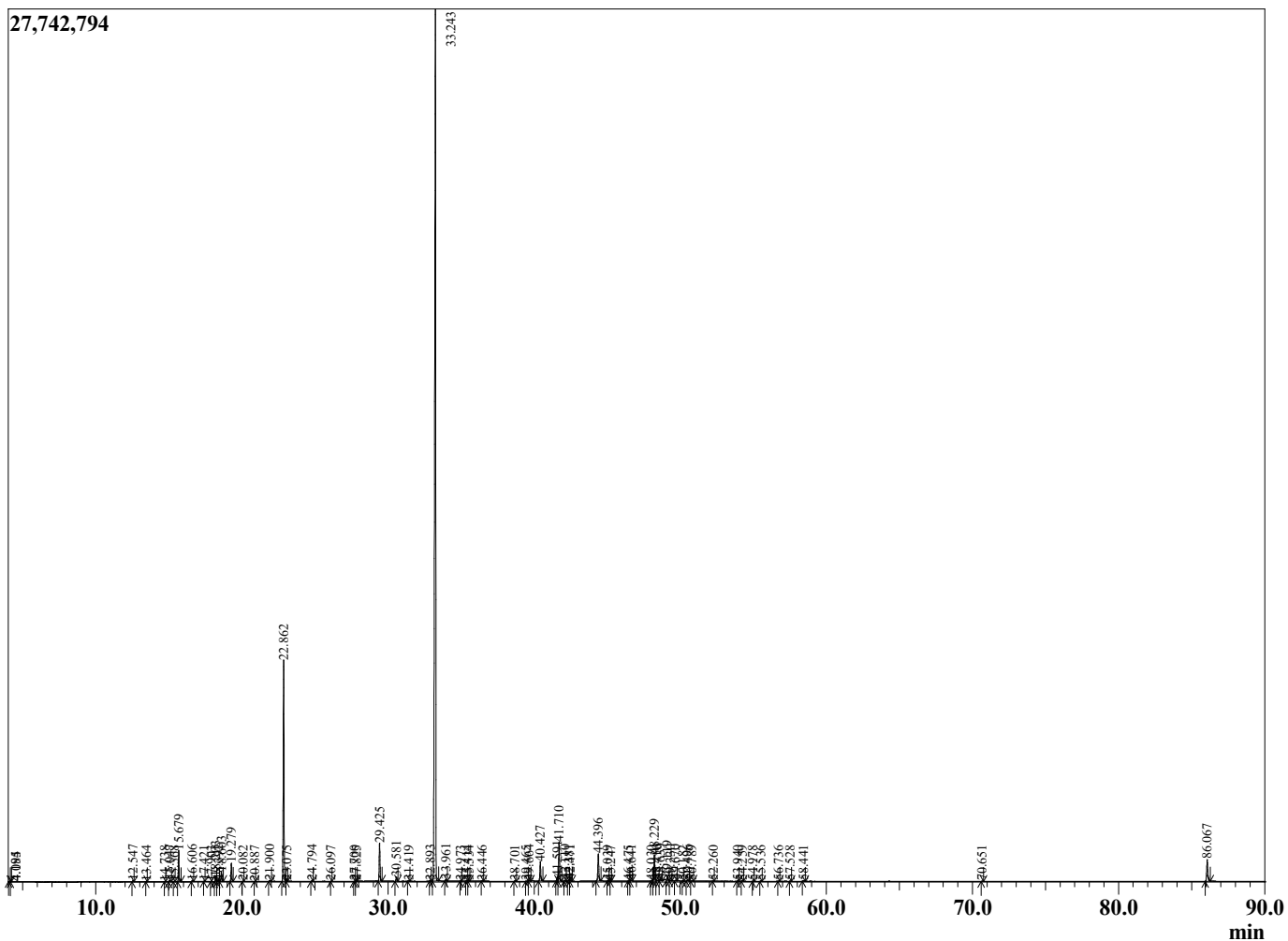


Sample Information

Sample Type : Essential Oil  
 Sample Name : Salvia sclarea  
 Injection Volume : 0.10  
 Clary Sage Premium  
 Lot# USD19-DE  
 Country: USA



Chromatogram Salvia sclarea



R.Time	Name	Area%
4.085	3-Methylbutanal	0.01
4.194	2-Methylbutanal	0.01
12.547	alpha-Pinene	0.06
13.464	Camphene	0.01
14.738	Sabinene	0.02
15.047	beta-Pinene	0.09
15.368	Unidentified	0.01
15.679	Myrcene	1.62
16.606	Pseudolimonene	0.06
17.421	alpha-Terpinene	0.01
17.903	para-Cymene	0.01
18.203	Limonene	0.26
18.392	1,8-Cineole	0.11
18.603	cis-beta-Ocimene	0.52
19.279	trans-beta-Ocimene	0.98
20.082	gamma-Terpinene	0.02
20.887	cis-Linalool oxide (furanoid)	0.01
21.900	Terpinolene	0.07
22.862	Linalool	13.21
23.075	Hotrienol	0.02
24.794	allo-Ocimene	0.04
26.097	Camphor	0.01
27.700	delta-Terpineol	0.01
27.825	Borneol	0.02
29.425	alpha-Terpineol	2.32
30.581	Linalyl formate	0.27
31.419	Nerol	0.03
32.893	Unidentified	0.03
33.243	Linalyl acetate	69.07
33.961	Unidentified	0.11
34.973	Unidentified	0.01
35.414	Isobornyl acetate	0.02
35.534	Bornyl acetate	0.02
36.446	Geranyl formate	0.03
38.701	Unidentified	0.04
39.465	Unidentified	0.02
39.664	alpha-Terpinyl acetate	0.05
40.427	Neryl acetate	1.28
41.591	alpha-Copaene	0.29
41.710	Geranyl acetate	2.49
42.110	beta-Bourbonene	0.05
42.381	beta-Cubebene	0.08
42.471	beta-Elementene	0.06
44.396	beta-Caryophyllene	1.92
45.039	beta-Copaene	0.01
45.247	cis-alpha-Bergamotene	0.01
46.475	cis-beta-Farnesene	0.01
46.641	alpha-Humulene	0.05
48.030	Unidentified	0.03
48.229	Germacrene D	1.79
48.410	Unidentified	0.09
48.639	Eremophilene	0.14
49.119	Bicyclogermacrene	0.35
49.330	Unidentified	0.03
49.670	trans,trans-alpha-Farnesene	0.04
50.182	gamma-Cadinene	0.01
86.067		

R.Time	Name	Area%
50.496	delta-Cadinene	0.09
50.789	Unidentified	0.02
52.260	Unidentified	0.01
53.940	Spathulenol	0.03
54.259	Caryophyllene oxide	0.03
54.978	Unidentified	0.01
55.536	Unidentified	0.03
56.736	Unidentified	0.02
57.528	Unidentified	0.02
58.441	beta-Eudesmol	0.04
70.651	Sclareoloxide	0.02
86.067	Sclareol	1.76
		100.00